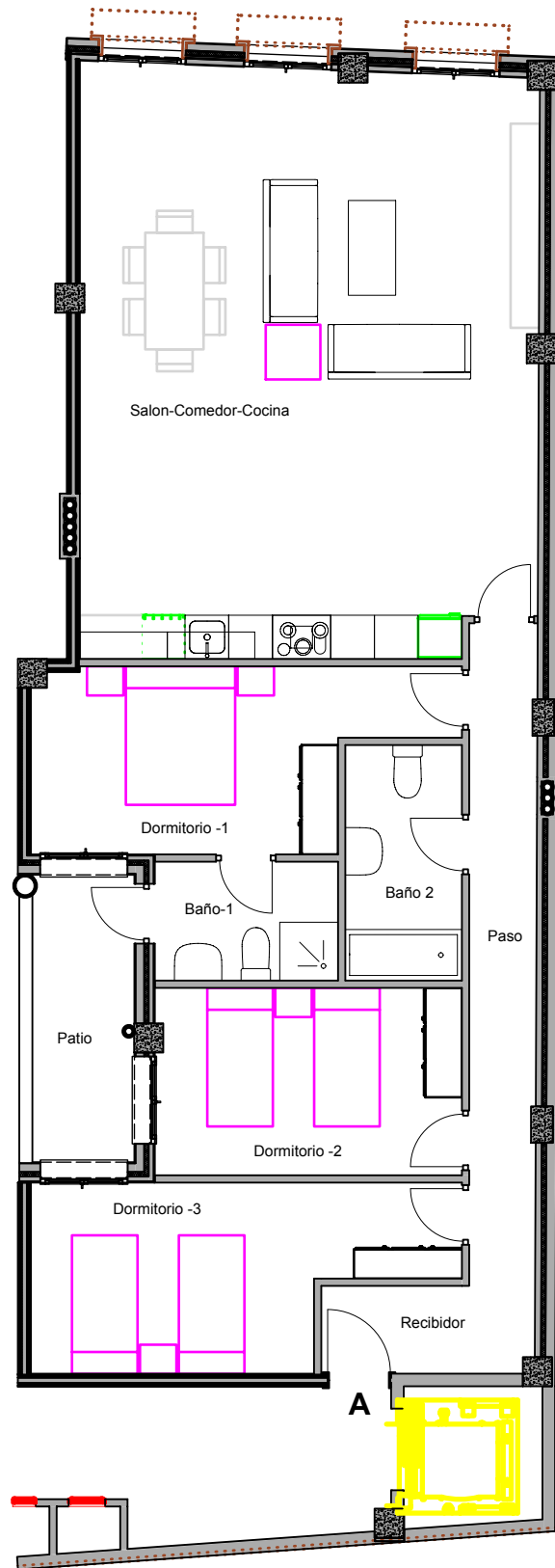
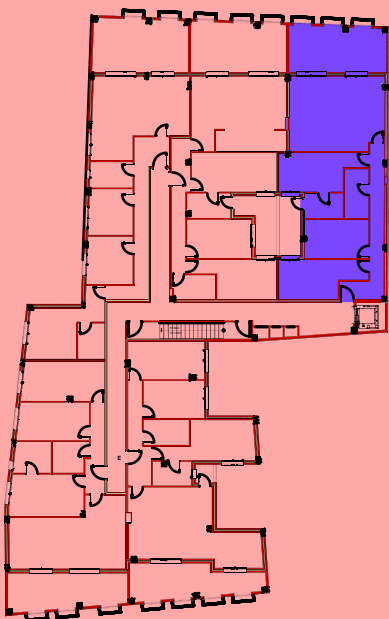




C/ ORTEGA Y GASSET

PLANTA 1ª MODIFICADO 1

	A
SALON-COMEDOR-COCINA	46.59
RECIBIDOR	3.49
DORMITORIO 1	12.44
DORMITORIO 2	10.79
DORMITORIO 3	12.85
GALERIA 50%	0.00
PASO	10.80
BAÑO 1	4.10
BAÑO 2	5.17
BALCONES 50%	1.10
COCINA	0.00
SUP. UTIL	107.33
SUP. CONSTRUIDA	122.16
ZONAS COMUNES	20.42
TOTAL CONSTRUIDA	142.58
PATIO INTERIOR	5.30



PISO 1º A MODIFICADO 3